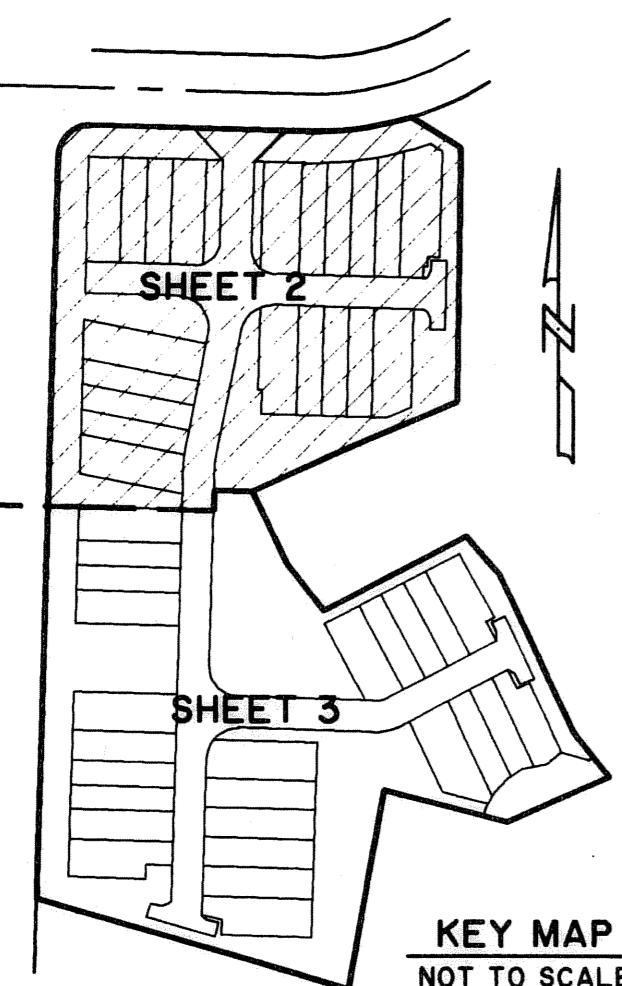


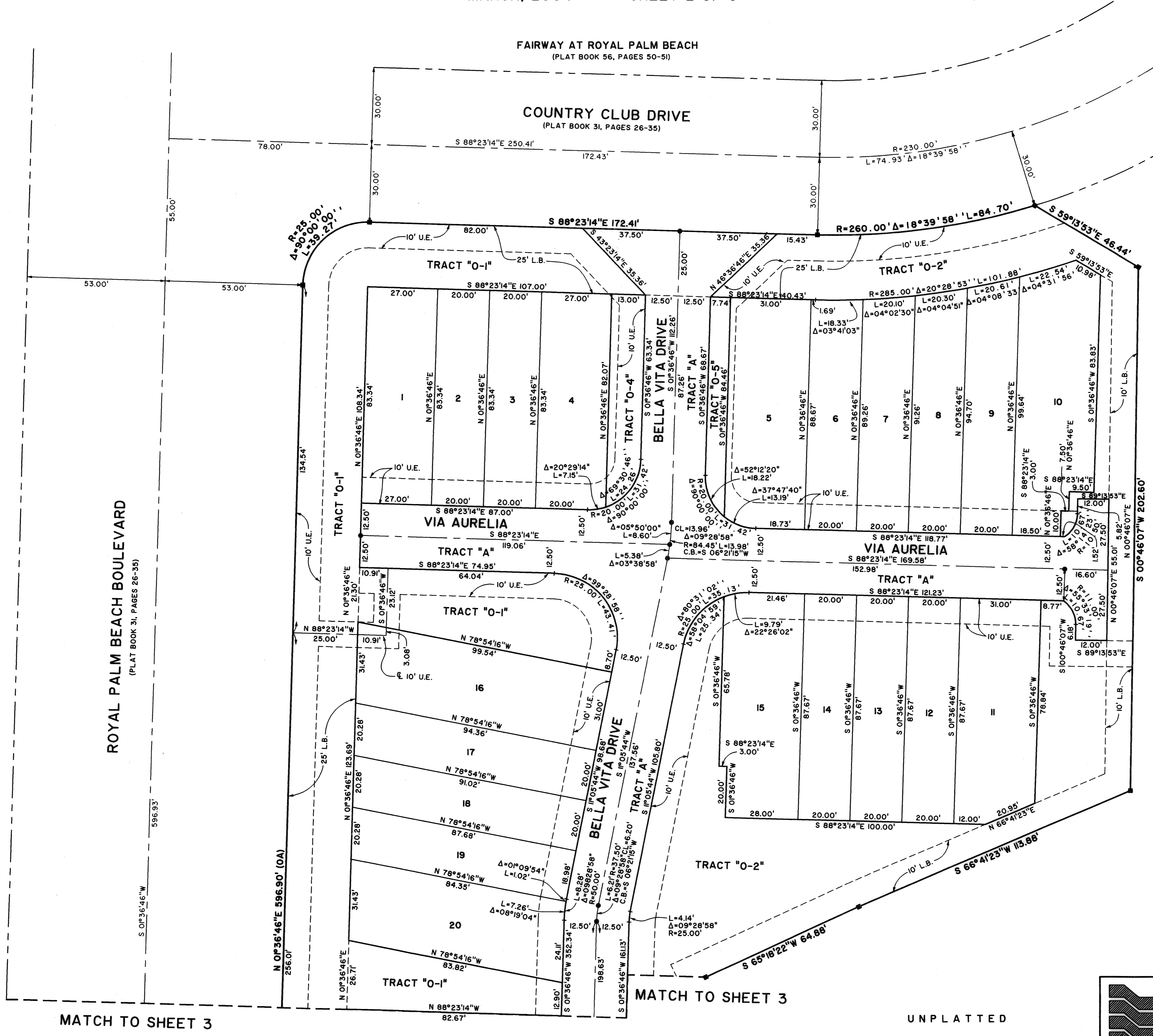
# BELLA VITA

BEING A PORTION OF SECTION 23, TOWNSHIP 43 SOUTH, RANGE 41 EAST,  
VILLAGE OF ROYAL PALM BEACH, PALM BEACH COUNTY, FLORIDA.  
MARCH, 2004 SHEET 2 OF 3

45



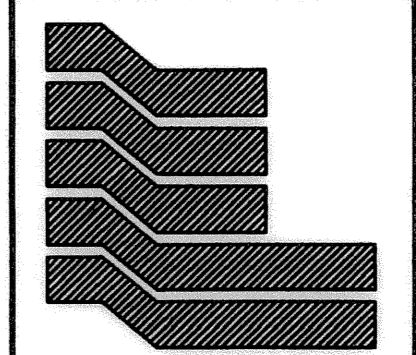
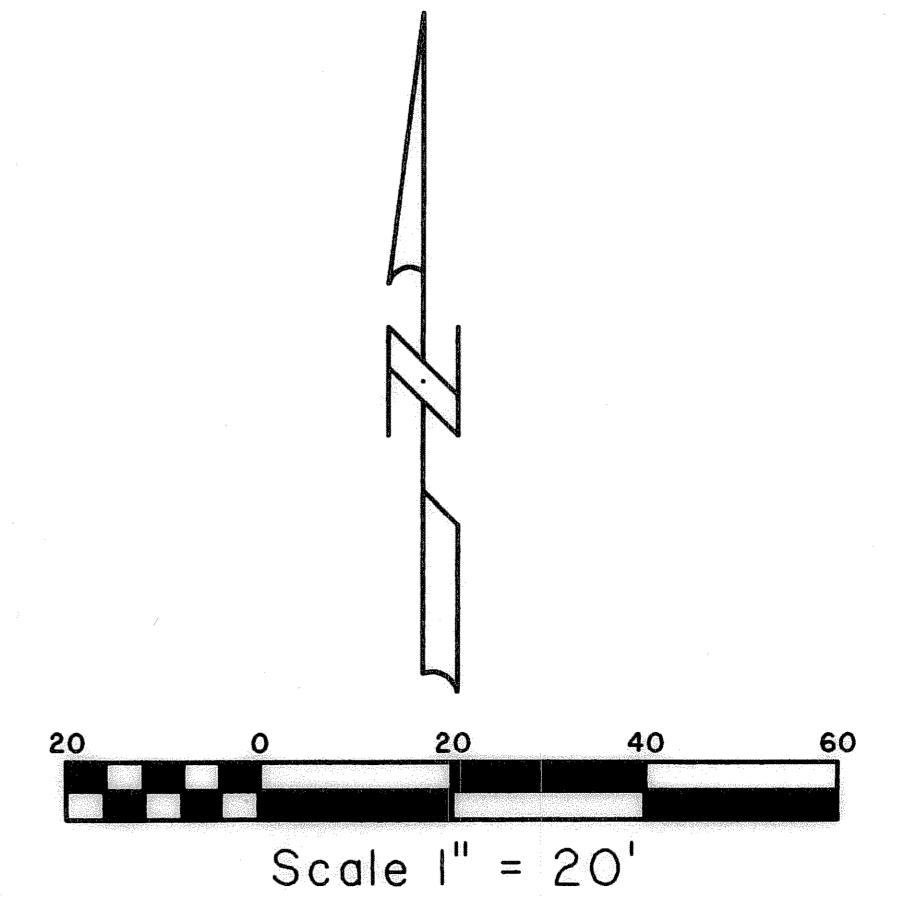
STATE OF FLORIDA SS  
COUNTY OF PALM BEACH  
THIS PLAT WAS FILED FOR RECORD AT \_\_\_\_\_  
M. THIS \_\_\_\_\_ DAY OF \_\_\_\_\_ 2004  
AND DULY RECORDED IN PLAT BOOK NO. \_\_\_\_\_  
ON PAGE \_\_\_\_\_  
DOROTHY H. WILKEN,  
CLERK OF THE CIRCUIT COURT  
BY \_\_\_\_\_ D.C.



ROYAL PALM BEACH BOULEVARD  
(PLAT BOOK 31, PAGES 26-35)

MATCH TO SHEET 3

UNPLATTED



Landmark Surveying & Mapping Inc.  
1850 Forest Hill Boulevard  
Ph. (561) 433-5405 Suite 100 W.P.B. Florida  
LB # 4396

BELLA VITA

C:\EP\PM\13\MOBS\2599\2599\_S42\_Tue Apr 27 08:35:08 2004 PLOTTED BY LESLIE C. BISSPOTT